



Examinations

As a central starting point, the "Servicepoint" Examinations provides you with answers and general advice on examination-related questions.

Please note that it is not possible to offer detailed advice on specific examination or study program related questions.

For further information, please contact your [faculty's examination office](#)

(<http://www.servicecenter.ovgu.de/csc/en/Examinations/Examination+Offices.html>).

Our services for you

› [Degree Authentication](#)

(<http://www.servicecenter.ovgu.de/csc/en/Examinations/Services/Degr>

› [Transcript of Records](#)

(<http://www.servicecenter.ovgu.de/csc/en/Examinations/Services/Tran>

› [Pre-Authentication/Apostilles](#)

(http://www.servicecenter.ovgu.de/csc/en/Examinations/Services/Pre_p-758.html)

› [Thesis Submission](#)

(<http://www.servicecenter.ovgu.de/csc/en/News/Thesis+and+Document+Submission+outside+the+office+hours.html>)

Contact

Otto-von-Guericke-Universität

Magdeburg

Universitätsplatz 2

39106 Magdeburg

Campus Service Center

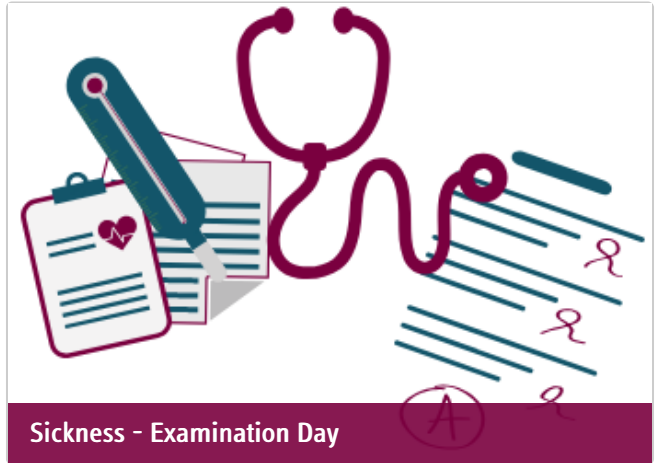
Building 18 - Room 153

Tel.: [+49 \(0\) 391 67 50 000](tel:+4903916750000)

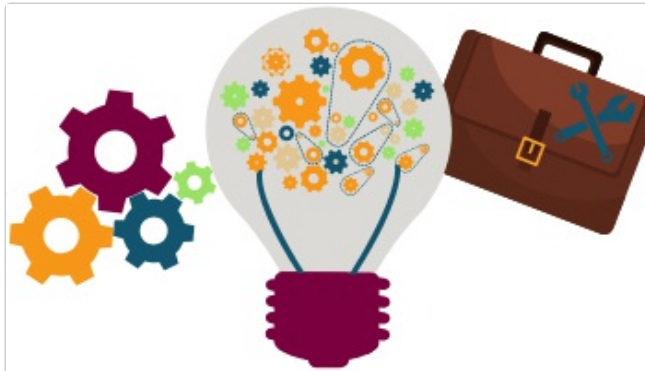
Fax: [+49 \(0\) 391 67 41 890](tel:+4903916741890)



Examination Offices



Sickness - Examination Day



Internship



Study Documents



Verification of Study Degrees

Office Hours Examinations

Only with appointment, please book online:
> <https://termine.ovgu.de>



Important dates and examination deadlines

FAQ Top5

- > [De-Registration](#)
- > [Generate new TAN-Lists](#)
- > [Transcript of Records](#)
- > [Thesis Submission](#)
- > [International student applicants](#)